

PASP HEAT EXCHANGER

A welded plate pack with rectangular plates



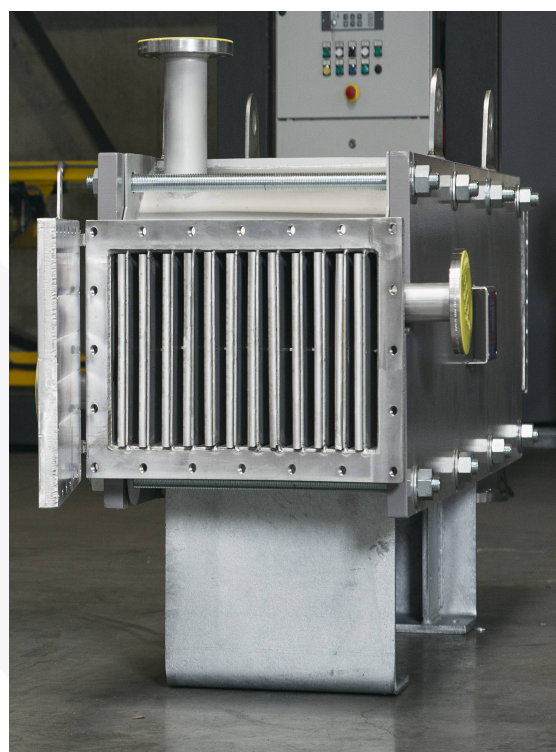
- Compact
- Easy mechanical cleaning
- 2 doors for full access on one side

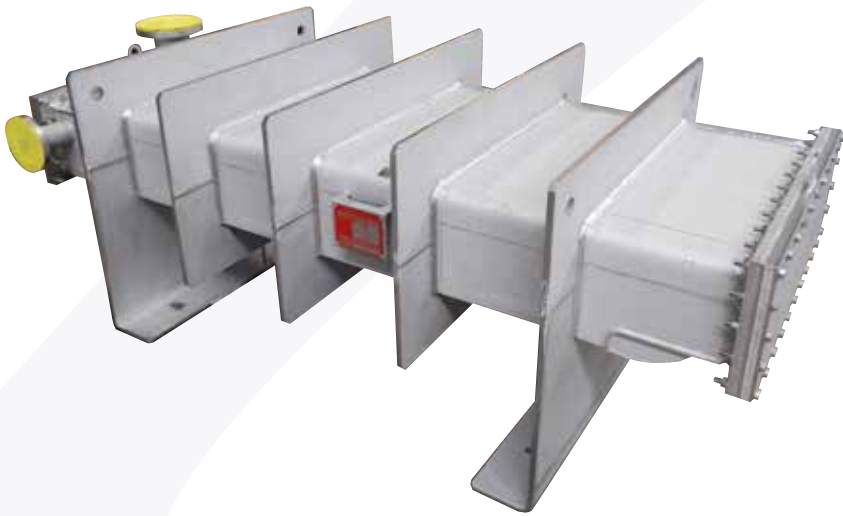
- The bundle is welded to end plates without stress
- One channel is fully accessible
- The other channel is all welded

Construction principle :

A rectangular bundle is fitted into a frame or compressed by 2 covers.

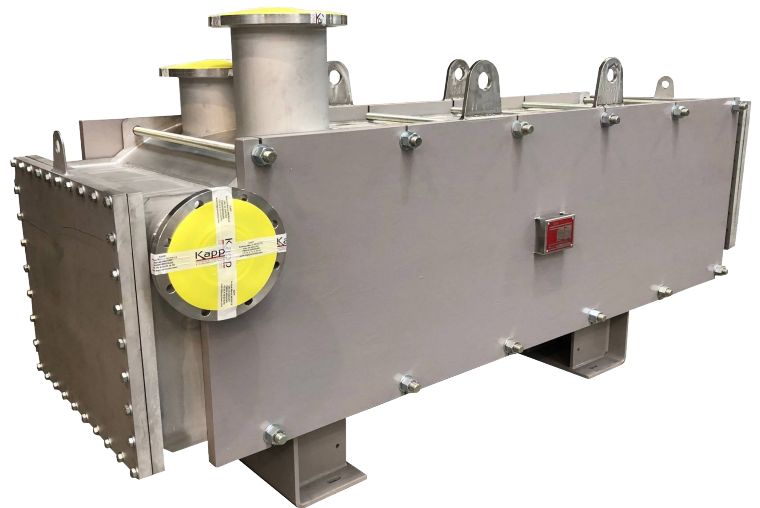
The PASP has 2 doors allowing full access to the free gap channel.





Fully stainless steel version
for Food, Pharmaceutical
applications or in corrosive
environment

Version with carbon steel
cover for industrial
applications



Selection criteria :

- Compact design 200 m²/ m³ - 1,5 m x 4.0 m on the floor for 500 m²
- Maximum pressure 15 bars
- Maximum temperature 250°C
- Exchange area up to 600 m² with one single module
- Mechanical cleaning on one channel
- Channel widths from 3 to 30 mm
- All welds can be inspected
- Used for monophasic, condensation or evaporation operation
- Design according to AD-MERKBLATT, CODAP, EN13445 ou ASME
- Manufactured in stainless steel, duplex, nickel alloy (Hastelloy C276 / C2000[®] / C22) or Titanium
- CE marking according to european norms (PED 2014/68/UE)